

Masri 25



39 Whitfield Crescent, Craigieburn 3064

Dream Large Live Large with the all new spacious family home

This compact family home has 4 generous bedrooms and 2 separate living areas. The heart of the home is a large spacious area with a deluxe kitchen where you and your family can relax together.

The master bedroom has a spacious ensuite and not to forget the walking robe. The Masri 25 welcomes and calls for all for a visit today at our displays.

Features

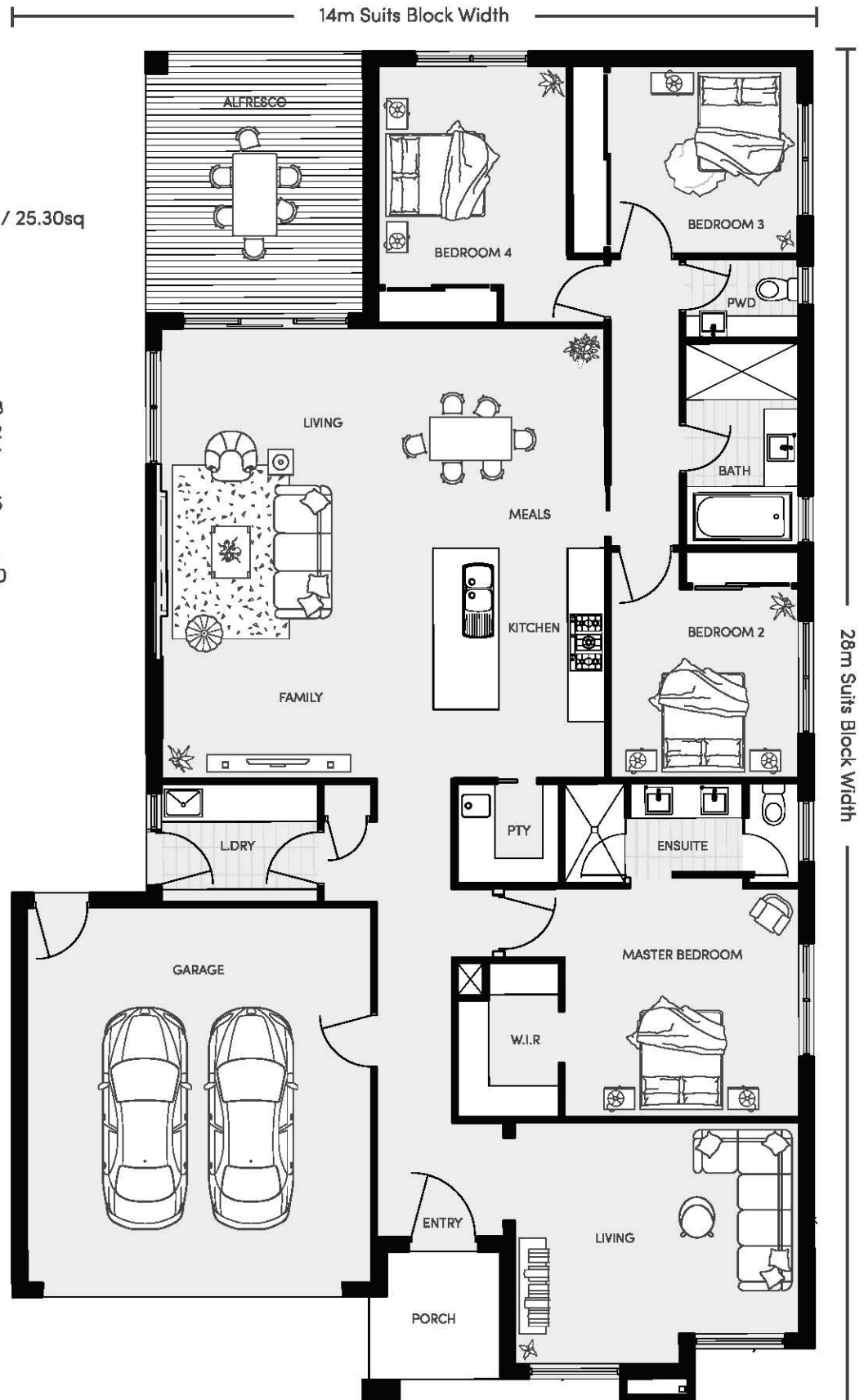
- 4 bedroom single storey home
- 2 Living Areas
- Available only with your own land
- Masri inclusions
- On display at Whitfield Crescent

From
\$347,138*



Scan the QR Code
For Download the Flyer

Masri 25 - Floor Plan



Specifications

Frontage	14
House Size	235.05m ² / 25.30sq
Home width	12.86m
Home length	21.67m

Room Dimensions

Living	4.55 x 3.38
Meals	3.63 x 3.52
Family	7.20 x 3.47
Master Bedroom	3.65 x 3.75
Alfresco	4.19 x 3.48
Garage	6.00 x 5.50